



Sailing Instructions

Club Program Racing 2024-2025 Season

These Sailing Instructions (**SI**) cover the club races listed in the Sailing Calendar for the 2024-2025 season.

The organising authority is Elwood Sailing Club Incorporated (**ESC**).

1. RULES

- 1.1. Racing will be under the authority of ESC and governed by the Notice of Race (**NOR**), the rules as defined in the Racing Rules of Sailing (**RRS**) and Australian Sailing (**AS**) prescriptions there-to, including Special Regulations Part 2 for off-the-beach boats, and the Sailing Instructions.
- 1.2. The racing rules will be modified in accordance with Rule 86, as follows:
 - a) Rule A2 is amended by the scoring system set out in NOR paragraph 8
 - b) Rule 49.1 is amended by the applicable class rules where they permit the use of additional devices
 - c) Rule 63.1 is amended by NOR paragraphs 2.5, 2.7 and SI paragraphs 12.1, 12.2, 14.4 and 16.1
 - d) Rule 26 has been changed, to allow for a 3-minute starting sequence, as per SI paragraph 13.6
 - e) Rule 44.1 when applied to catamaran classes, only one turn will be required as opposed to 2 turns
- 1.3. RRS Appendix T, Arbitration, applies for all Series.

2. CHANGES TO SAILING INSTRUCTIONS

- 2.1. Any changes to the Sailing Instructions will be posted no later than 60 minutes before the scheduled starting time of the first race on the day it will take effect, except that any changes in the schedule of races will be posted at least one week before it will take effect.
- 2.2. A notice that will remain on the board will advise any change that will apply for the remainder of the season's races. After signalling on the day of initial posting, no further signals will be made for this notice. It is each skipper's responsibility to check the board before sailing.

3. COMMUNICATIONS WITH COMPETITORS

- 3.1. The Control Tower is located upstairs in the clubhouse (SW corner).

- 3.2. Notices to competitors will be posted on the official Race Notice Board located above the sign-on/off bench in the boatshed.

4. CODE OF CONDUCT

- 4.1. ESC strives to provide competitive, fun, family friendly sailing for all skill levels. To achieve this everyone needs to be treated fairly with respect and dignity. There is no place at the Club for bullying, harassment or discrimination.
- 4.2. Competitors and support persons shall comply with all reasonable requests from race officials.
- 4.3. Competitors and Duty persons shall handle any equipment / boats provided by the organising authority with care, seamanship, in accordance with any instructions for its use and without interfering with its functionality.

5. SIGNALS MADE ASHORE

- 5.1. Signals made ashore will be displayed from the Control Tower.
- 5.2. When flag AP is displayed ashore '1 minute' is replaced with 'Not less than 30 minutes' in the race signal AP.

6. SCHEDULE OF CLUB RACES

- 6.1. Races are scheduled to be held on dates set out in the ESC Sailing Calendar for the 2024-25 season as published on the club website. The Sailing Calendar includes normal club races (Championship, Commodore and Vice Commodore series) and special races (Gold Cups).
- 6.2. Each race session will comprise one or two races.
- 6.3. If the first race incorporates a Tower Finish (refer paragraph 14.2), there will not be a second race.
- 6.4. There is no provision for resailing races on days other than the scheduled dates.

7. SAILING DIVISIONS AND FLEETS

- 7.1. Boats will be assigned to Divisions as set out in paragraph 9.3 and 9.4.
- 7.2. Within each Division there will be two fleets, a regular club racing fleet and a "K-Fleet".
- 7.3. K-Fleet is for designed for boats that prefer not to race in windy and rough conditions.
- 7.4. When code flag "K" is displayed by the Control Tower, K-Fleet boats will not race and must remain on shore.
- 7.5. When code flag "K" is displayed, all K-Fleet boats that have signed-on for the session will be scored DNF and will accrue storage points.
- 7.6. Boats wanting to sail in K-Fleet should notify the Tower Officer before their first trophy race of the season. Once registered, boats can only opt out of K-Fleet with the approval of the Rear Commodore.

8. RACING AREA

- 8.1. The racing area will be off Elwood Beach between Point Ormond and the Brighton breakwater.

9. COURSES

9.1. Courses to be sailed are detailed in Sailing Instructions paragraph 9.3 and 9.4, and Figure 1 and 2.

9.2. Races may be shortened or abandoned at the discretion of the Race Officer, in accordance with RRS 32, 32.1, 32.2.

9.3. Unless otherwise signalled, the following courses are to be sailed:

FLAG	DIVISION	MARK ROUNDING ORDER
1	Catamaran YS < 75	Start - AD - AD - AD - AD - Committee Boat Finish
2	Catamaran YS ≥75	Start - BCD - BD - BCD - BCD - Committee Boat Finish
3	Monohull YS <120	Start - BCD - BD - BCD - Committee Boat Finish
4	Monohull YS ≥ 120	Start - BCD - BD - Committee Boat Finish
5	Sabre Class	Start - BCD - BCD - Committee Boat Finish

9.4. If numeral pennant Six (6) is displayed by the Committee Boat prior to the start sequence, the following courses are to be sailed:

FLAG	DIVISION	MARK ROUNDING ORDER
1	Catamaran YS < 75	Start - AD - AD - AD - AD - XY - Tower Finish
2	Catamaran YS ≥75	Start - BCD - BD - BCD - BCD - XY - Tower Finish
3	Monohull YS <120	Start - BCD - BD - BCD - XY - Tower Finish
4	Monohull YS ≥ 120	Start - BCD - BD - XY - Tower Finish
5	Sabre Class	Start - BCD - BCD - XY - Tower Finish

10. MARKS

10.1. Course marks A, B, C, D, X and Y must be passed to port.

10.2. Except for mark 'Y', all marks will be inflatable or self-inflating buoys as follows:

MARK	IDENTIFICATION
A	Pink
B	Orange or Yellow
C	Orange or Yellow
D	Orange or Yellow
X	Red
Y	Stick mark with flag
Z	Red

11. OBSTRUCTIONS

- 11.1. A 'no-boating zone' and a speed restriction zone are present adjacent to the Club launch and race area (refer Figure 2). The no-boating zone and speed restriction zones are an 'obstruction' as defined in the Racing Rules of Sailing.
- 11.2. Unless starting or finishing, the start/finish line is an obstruction. The obstruction only exists when the Committee Boat is on-station.

12. SIGN-ON

- 12.1. For each racing session, skippers intending to race shall sign-on using the sign-on/off registration sheet in the boatshed. Failure to comply may result in a boat being scored DNC for the session without a hearing.
- 12.2. On the water, a boat intending to race shall hail the committee vessel prior to the start sequence of the boat's first start of the racing session. The committee vessel will signal acceptance of the boat's hail. The boat shall repeat the process until it observes acceptance by the committee vessel. Failure to comply may result in a boat being scored DNC for the session without a hearing.
- 12.3. Visiting skippers and their crew must also complete the visitor registration form in the boatshed.

13. THE START

- 13.1. The Orange flag (one sound signal) indicates that the Committee Vessel will commence a starting sequence no earlier than 5 minutes from when the flag is hoisted.
- 13.2. The first warning signal will not be made before 13:27hrs.
- 13.3. The starting line will be between the Orange Flag approximately amidships of the Committee boat and mark X.
- 13.4. A Clearance buoy may be deployed from the stern of the Committee boat and shall be considered an extension of the Committee boat.
- 13.5. Boats whose preparatory signal has not been made shall keep clear of the starting area and of all boats whose preparatory signal has been made.
- 13.6. The following sequence of signals will be used to start races. Times will be taken from the hoisting and lowering of the relevant flags and pennants. A sound signal will accompany the hoisting of these signals where possible. Times shall be taken from the visual signals.

Minutes before Starting signal	Visual Signal	Accompanying Sound Signal	Meaning
3	Division Flag(s)	One	Warning Signal
2	P, I, Z, Z with I, U or Black Flag	One	Preparatory Signal
1	Preparatory Flag removed	One (long)	One Minute signal
0	Division Flag removed	One	Starting Signal

- 13.7. A boat starting later than ten (10) minutes after her starting signal will be scored 'Did Not Start.'
- 13.8. Numeral pennant Nine (9) signifies that ALL divisions that have not started will start at the same time.

14. THE FINISH

- 14.1. Unless otherwise signalled by the Committee Boat, the finish will be between the Blue Flag approximately amidships of the Committee Boat and mark X.
- 14.2. If numeral pennant Six (6) is displayed by the Committee Boat prior to the commencement of the start sequence, the finish will be between the Control Tower and mark Z. Boats must not enter obstructed water when racing or finishing (refer paragraph 11 and Figure 2).
- 14.3. Boats will finish in the direction from the previous mark.
- 14.4. Boats that cross the finishing line when not finishing the race will be disqualified for that race without a hearing. This amends Rule 63.1.
- 14.5. Attention is drawn to the Racing Rules of Sailing Definition of Finish.

15. TIME LIMIT

- 15.1. The target time for each race is 45 to 60 minutes.
- 15.2. If no boat has rounded the first mark of the course within 20 minutes of the start, the race will be abandoned. A race may also be abandoned at the discretion of the Race Officer.
- 15.3. Boats still racing 15 minutes after the first boat from their division finishes may be finished by the Race Officer. Boats so finished will be scored as "RGc" (Redress Given Points Allocated) and will receive points equal to the position they were in at the time they were ordered to finish.

16. SIGN-OFF

- 16.1. All boats that have entered for a race shall be signed off by a crew member on the sign-on/off registration sheet in the boatshed no later than 30 minutes after the last boat finishes the final race of the day. Failure to comply may result in those boats being scored 'Did Not Finish' without a hearing. This amends Rule 63.1.

17. HEARING REQUEST

- 17.1. Boats intending to protest or request redress shall signify their intent in writing. Appropriate forms are available from the Race Control Tower and must be lodged there within 1 hour after the last boat finishes the last racing session of the day.
- 17.2. Protests and requests for redress will be heard in the club Committee Room at a time to be determined by the Race Committee. All parties will be notified of the times.
- 17.3. Notice of a protest hearing will be posted on the official Race Notice Board within 30 minutes of receipt of the protest.

18. SCORING & PRIZES

- 18.1. The Scoring and Prizes will be awarded as set out in the NOR, in paragraphs 8 and 9.

19. RACE RESULTS

- 19.1. Provisional race results will be posted on the Club website, as they are finalised, and remain provisional until the end of the racing season.

20. SAFETY REGULATIONS

- 20.1. All sailors must wear an approved personal floatation device (PFD1 or PFD2) when on the water. Personal floatation device must be of solid construction and non-inflatable.
- 20.2. A boat that retires from a race shall notify race management (Patrol boats or Race Control Tower) at the first reasonable opportunity.

21. EQUIPMENT AND MEASUREMENT CHECKS

- 21.1. A boat or equipment may be inspected at any time for compliance with the class rules, notice of race, sailing instructions and Australian Sailing Special Regulations Part 2 Equipment Audit.

22. RISK STATEMENT

- 22.1. RRS 3 states: 'The responsibility for a boat's decision to participate in a race or to continue racing is hers alone.' By participating in this event each competitor agrees and acknowledges that sailing is a potentially dangerous activity with inherent risks. These risks include strong winds and rough seas, sudden changes in weather, failure of equipment, boat handling errors, poor seamanship by other boats, loss of balance on an unstable platform and fatigue resulting in increased risk of injury. **Inherent in the sport of sailing is the risk of permanent, catastrophic injury or death by drowning, trauma, hypothermia or other causes.**
- 22.2. Competitors who participate in Elwood Sailing Club Inc. races do so entirely at their own risk and responsibility.
- 22.3. The Elwood Sailing Club Inc. will not accept any liability for material damage or personal injury or death sustained in conjunction with, or prior to, during or after races.

23. INSURANCE

- 23.1. Each participating boat shall be insured with valid third-party liability insurance with a minimum cover of \$10 million per incident or the equivalent.

Figure 1: Course Diagram

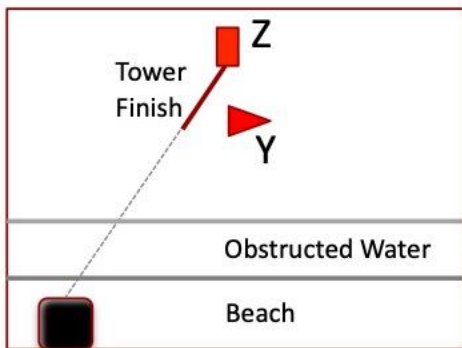
Notes:

- All course marks must be passed to port
- Diagram is not to scale



Insert: Tower Finish

Refer Figure 2 for more details



Control
Tower

Figure 2 – Tower Finish, Obstructions

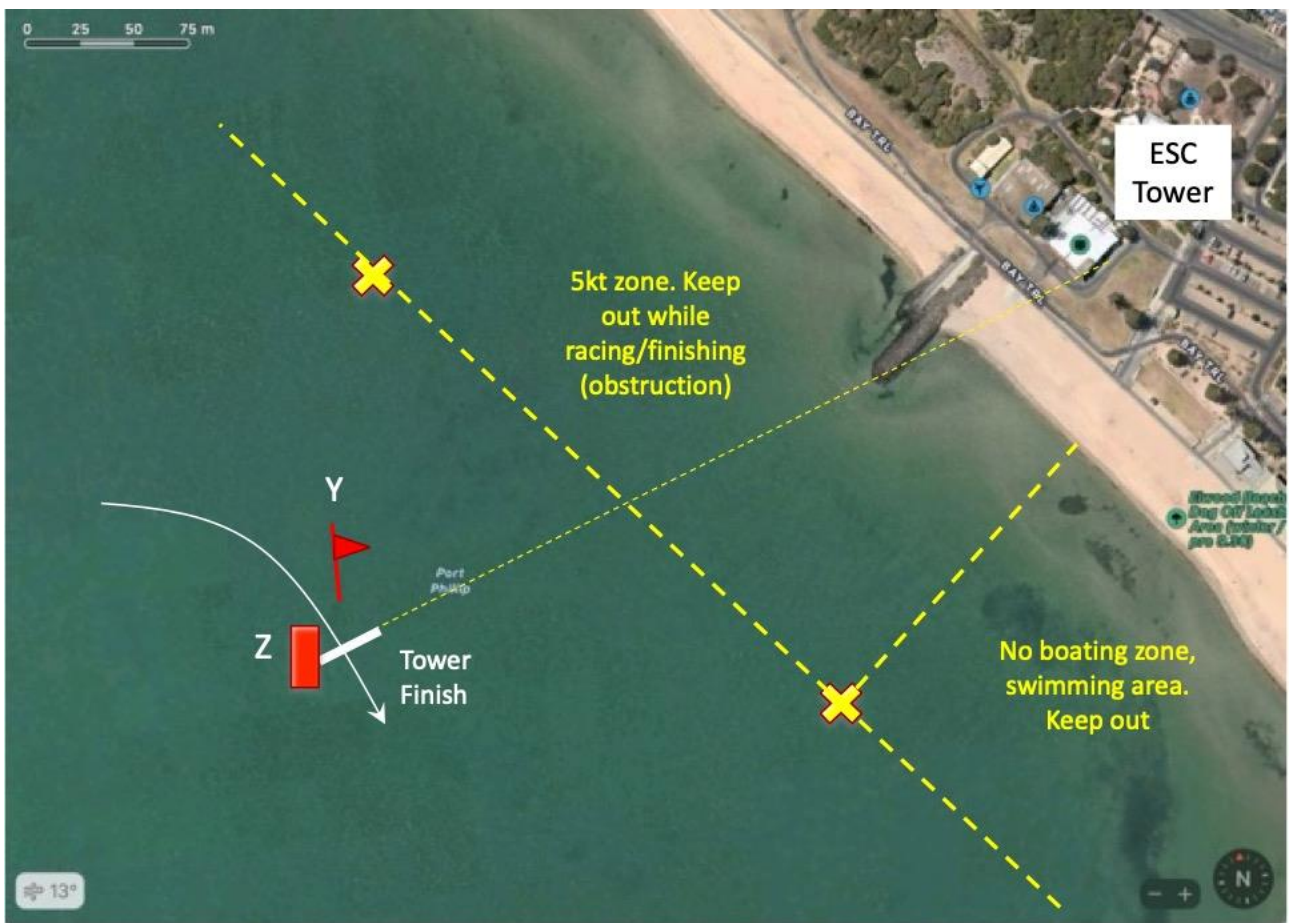
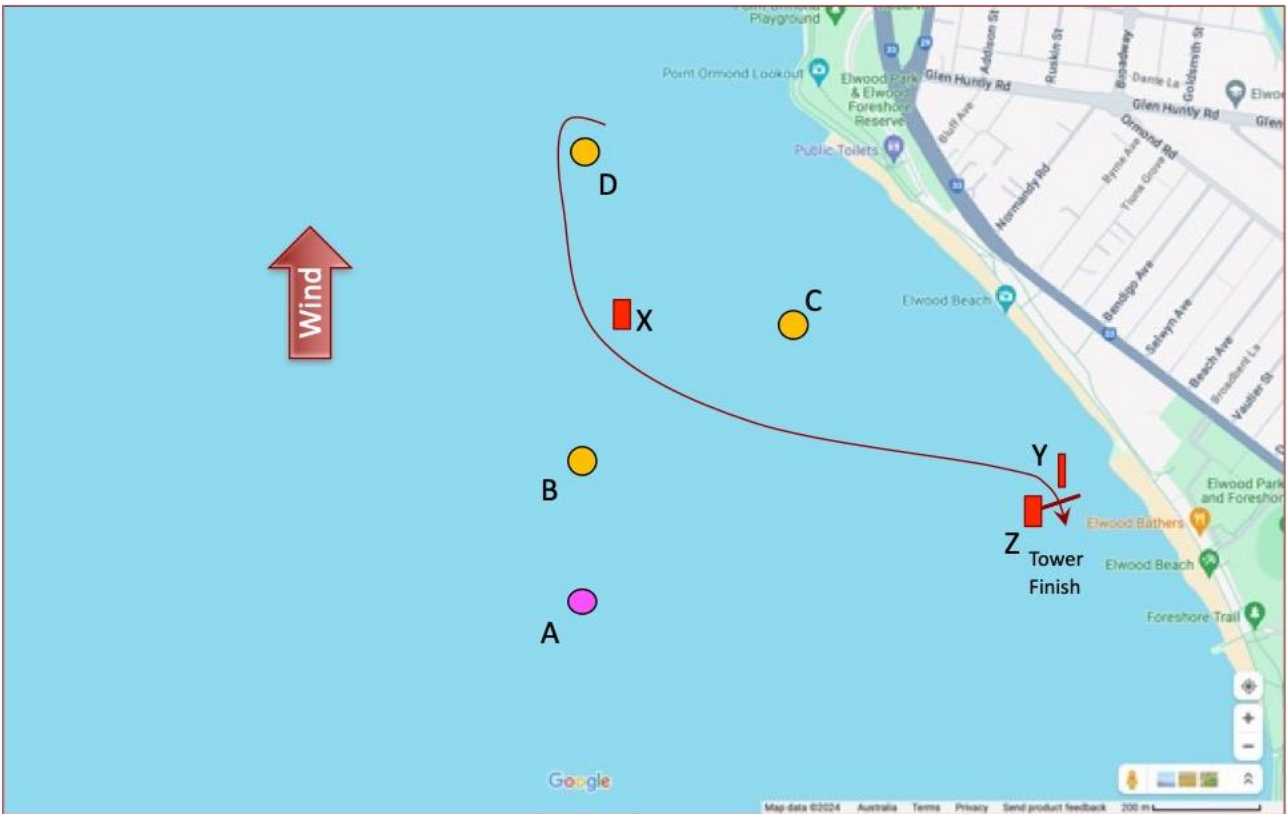
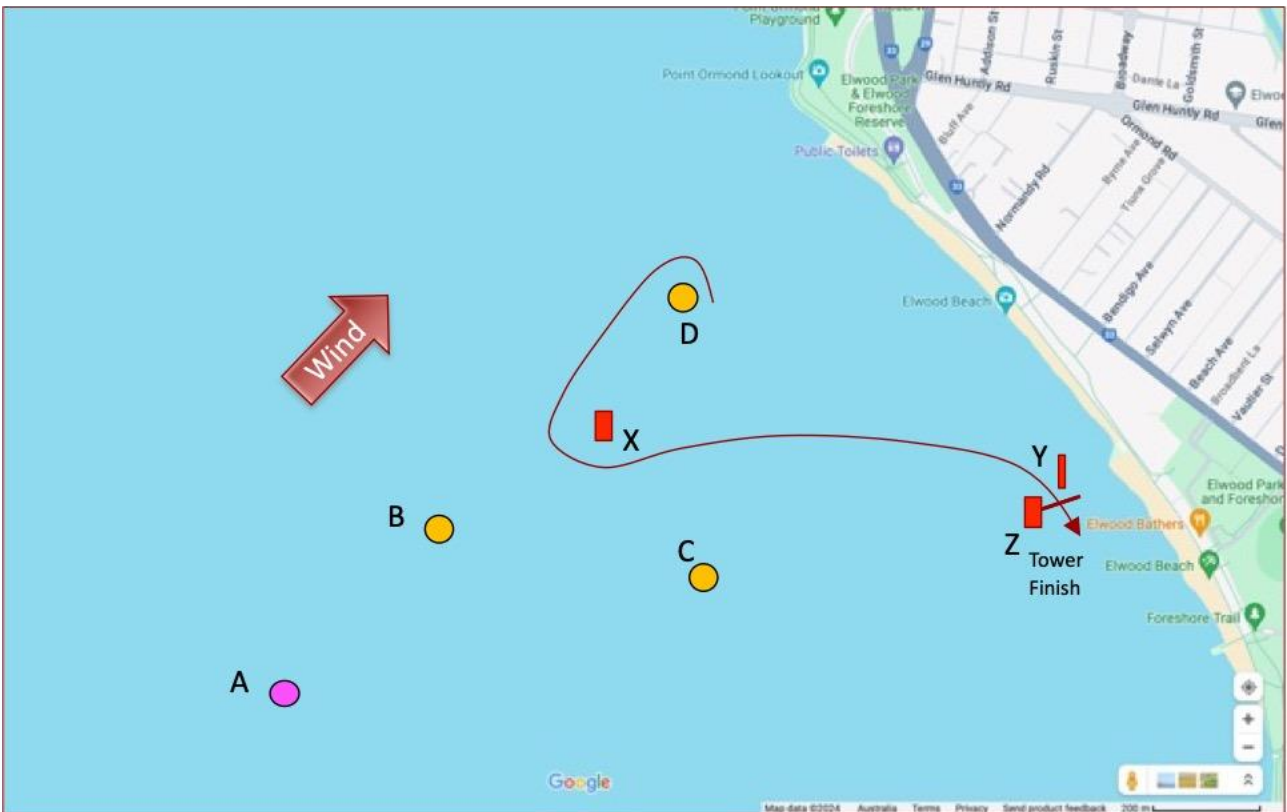


Figure 3 – Tower Finish Examples

Example 1 - Southerly



Example 2 - South-Westerly



Example 3 - Westerly

