

# Clubhouse Emergency Response Plan

## On-Shore Medical Emergencies

In the case of a medical emergency, do not hesitate to call 000.

You or someone else may be able to help by:

- Calling 000
- Administering first aid / CPR
- Meeting Ambulance Services when they enter the council car park
- Asking onlookers to move on and/or establishing a privacy screen

The Club Manager or a Flag Officer should be notified of a medical emergency as soon as it is practical to do so. They are well placed to coordinate the response, including contacting next of kin.

The Club's defibrillator is located in the boatshed. The defibrillator can make a significant difference to the potential outcome for a heart attack victim. Have the confidence to use it in accordance with the associated instructions. A training video for the Club's defibrillator can be found at:

[https://www.youtube.com/watch?v=J\\_lmWURMHgo](https://www.youtube.com/watch?v=J_lmWURMHgo)

An EpiPen is located in the first aid cabinet in the kitchen, but may only be used by the Club Manager, a trained first aider or the patient.

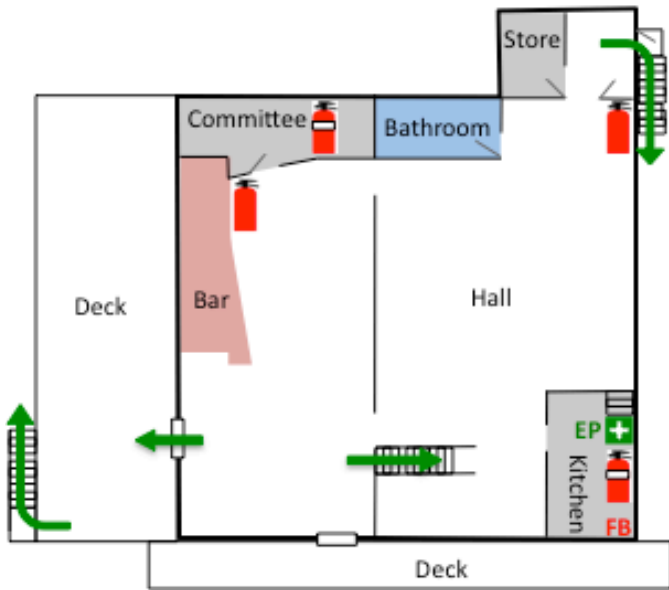
## Emergency Assembly Point

In an emergency requiring evacuation of the Clubhouse, Members and their guests shall make their way to the Club's designated emergency assembly point – under the two pine trees to the south of the clubhouse.



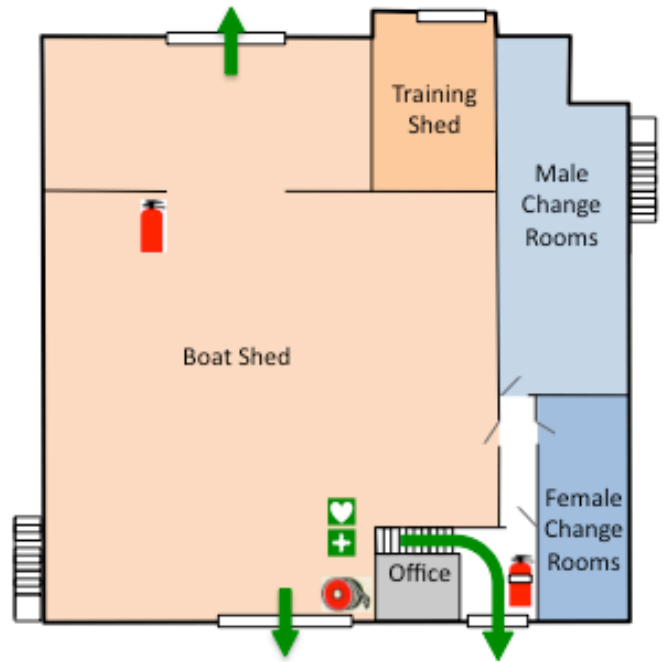
# Emergency Diagram – Clubhouse

First Floor



➔ Emergency Exit

Ground Floor



- |    |               |    |                                |
|----|---------------|----|--------------------------------|
| +  | First Aid     | 🔥  | Fire Extinguisher (water)      |
| EP | EpiPen        | 🔥  | Fire Extinguisher (dry powder) |
| 👤  | Defibrillator | 🚒  | Fire Hose                      |
|    |               | FB | Fire Blanket                   |

Verified: 3 Mar 2019